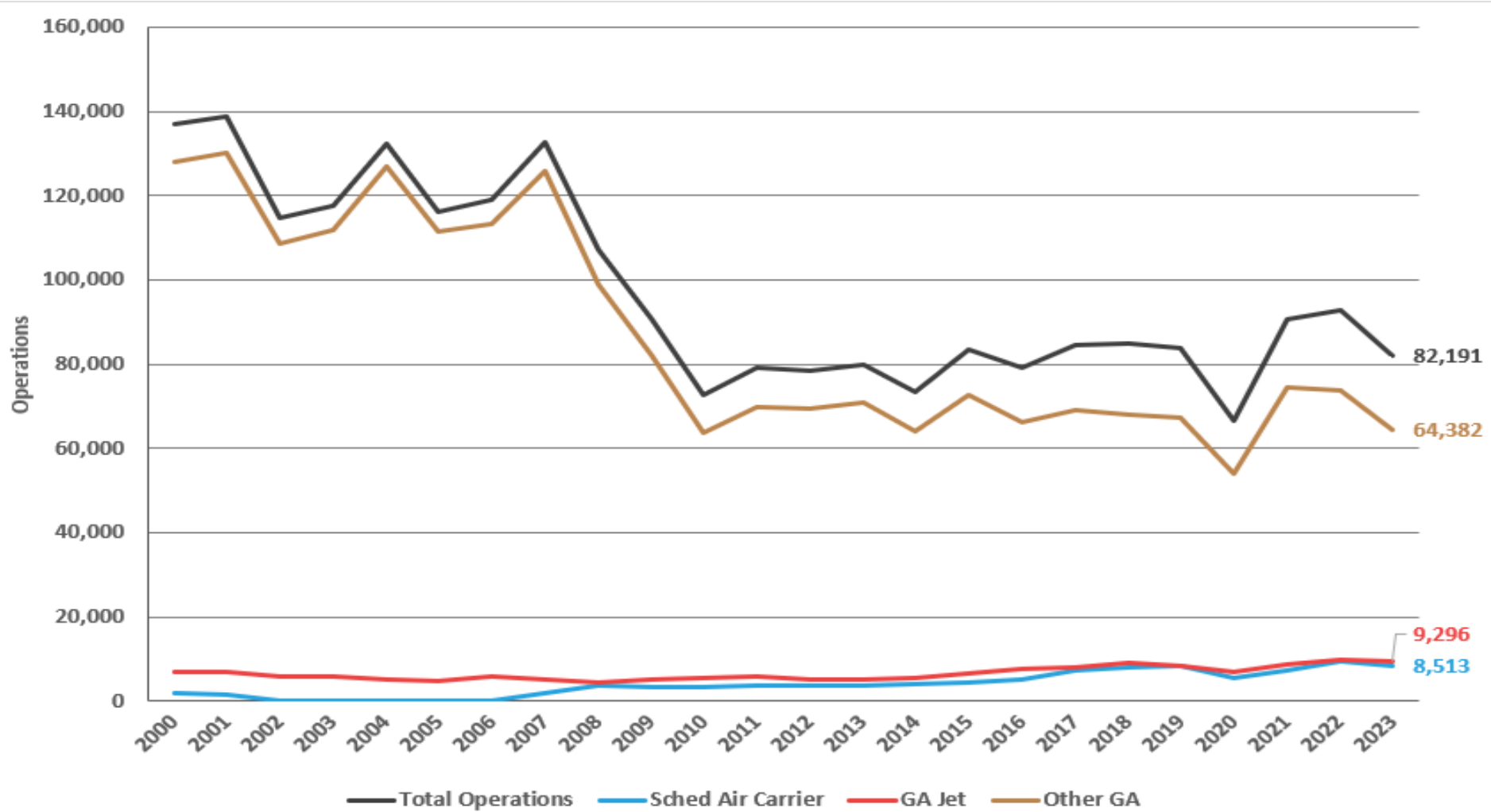




Charles M. Schulz – Sonoma County Airport  
Updates to  
Windsor SIR  
April 17, 2024



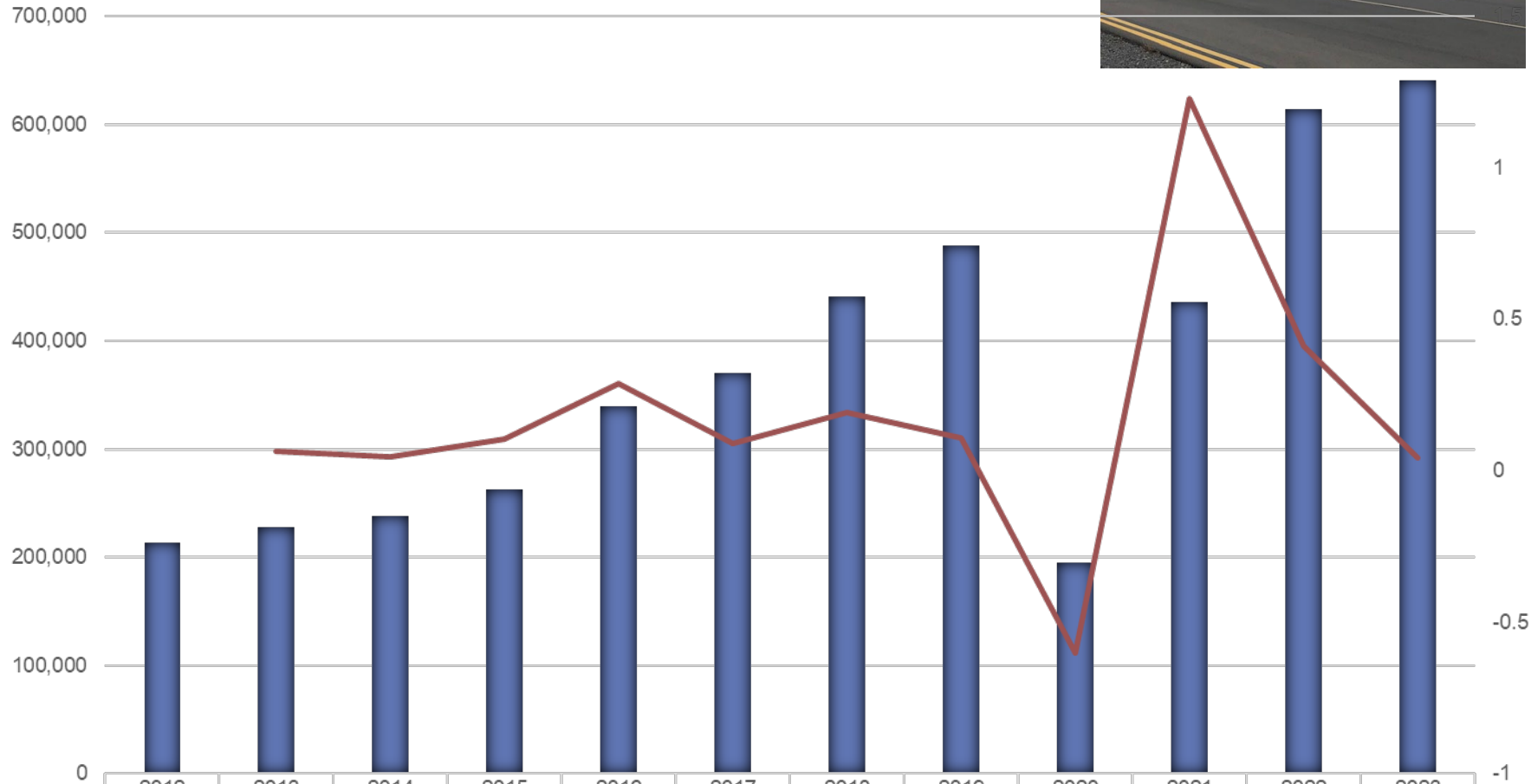
# Historical Operations



# Airport Passenger Levels



Passenger Comparisons

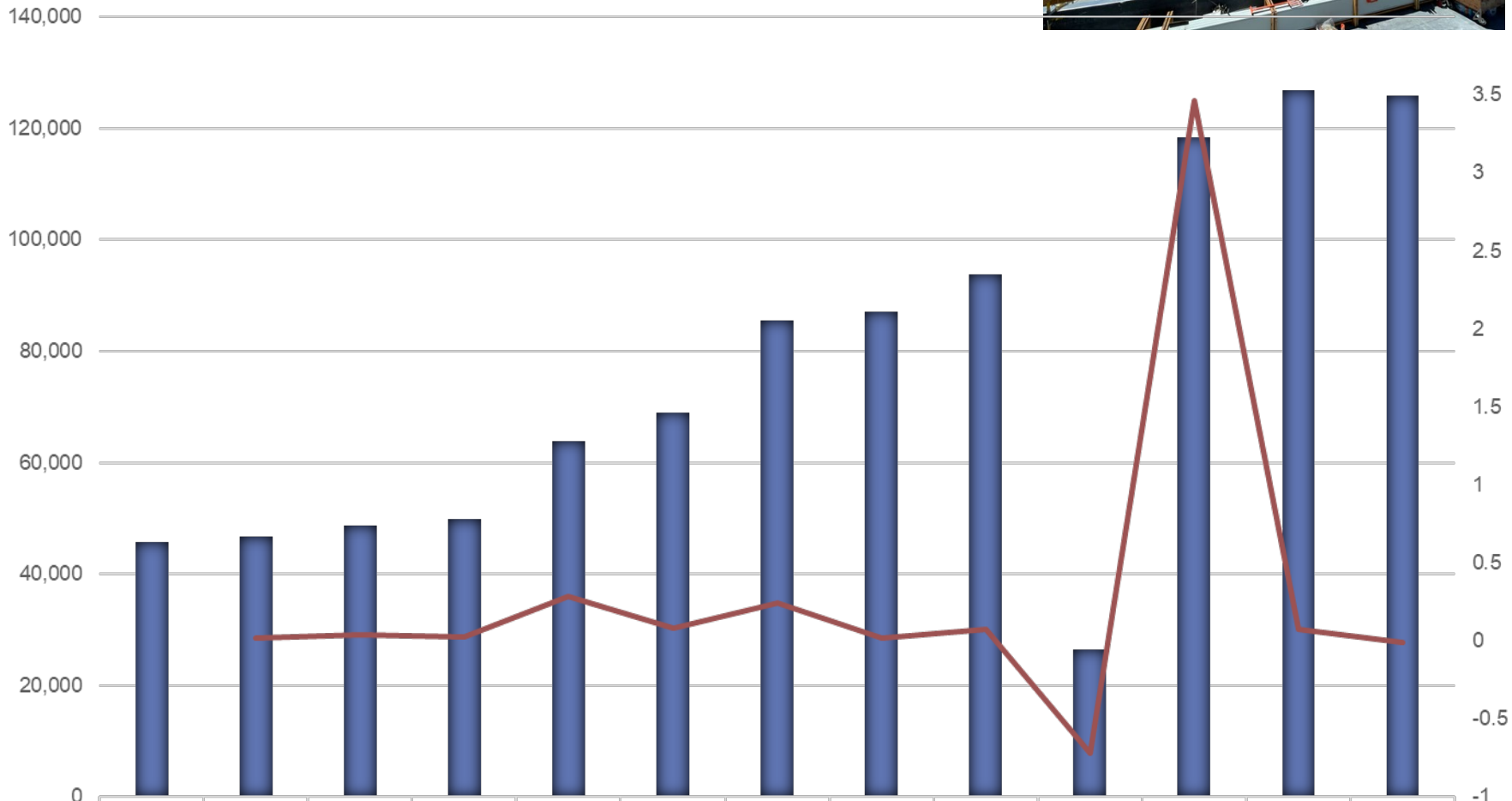


Passenger	213,917	227,998	238,320	263,142	339,191	370,084	440,644	488,179	195,303	435,427	614,481	641,178
YOY Change		6.58%	4.53%	10.42%	28.90%	9.11%	19.07%	10.79%	-59.99%	122.95%	41.12%	4.34%

Passenger YOY Change

# Airport Passenger Levels

March Year to Date Passenger Comparisons



	2012	2013	2014	2015	2016	2017	2018	2019	2020	2021	2022	2023	2024
Passenger	45,834	46,814	48,635	49,791	63,892	68,935	85,602	87,149	93,775	26,516	118,424	126,897	125,909
YOY Change		2.14%	3.89%	2.38%	28.32%	7.89%	24.18%	1.81%	7.60%	-71.72%	346.61%	7.15%	-0.78%

Passenger YOY Change

# Air Service Updates

- Airport has 11 destinations
  - Alaska – BUR, LAX, PDX, SAN, SEA, SNA
  - American Airlines - PHX, DFW
  - Avelo – BUR, LAS, PSP, RDM
- Future opportunities

July 2023 Route Map



# Air Service Updates

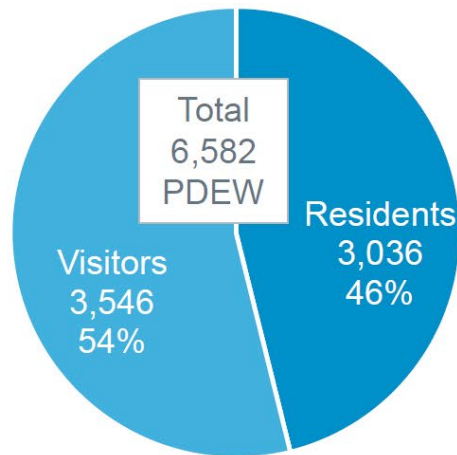
- Airport 15 Destinations – May 2024



# STS Catchment Total Passengers

## STS Catchment Passengers Year-ending 3Q 2022

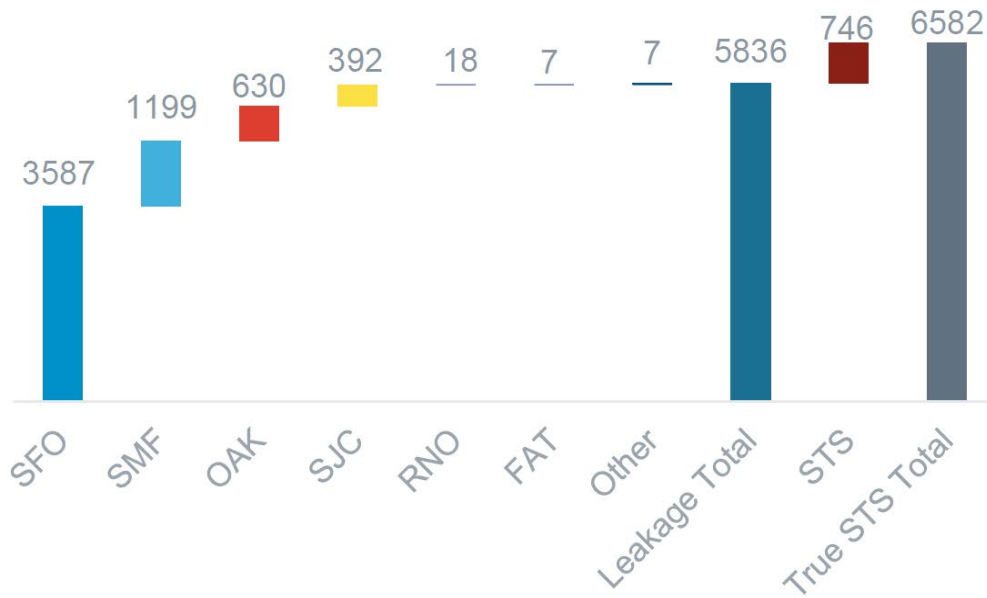
- For YE3Q22, **4,804,811** traveled to or from the STS Catchment
- ~**6,582** passengers **Per Day Each Way (PDEW)**



- **46%** of those passengers were **Residents**, or 3,036 PDEW
- **55%** were **Visitors** to the region, or 3,546 PDEW

# STS – Catchment Leaked 89%

## STS Catchment Airport Utilization



- ▶ 5,836 PDEW of 6,582 PDEW used non-STS airports, meaning **89% of STS catchment traffic was leaking** to other airports
- ▶ 746 PDEW, or 11%, are retained in the STS catchment by using STS airport











# Top markets for Catchment Area Residents

- Catchment Area travelers travel to major metro areas
- STS has nonstop service, generally 15% use STS
- Where STS does not have nonstops, few travelers still use STS

Metro Area	Passengers Per Day	% Using Other Airports
Los Angeles	1,189	84%
San Diego	403	87%
New York City	375	99%
Seattle	347	84%
Las Vegas	299	97%
Denver	214	92%
Portland, OR	214	76%
Phoenix	209	85%
Chicago	192	99%
Washington, DC	169	98%

# STS Passenger Profile

	Segment	Description	Share of STS Pax	
	Booming w/ Confidence	Affluent & highly educated 50-75-year-old suburbanites maintaining high discretionary income	15.8%	Late Career or Retired Couples 31%
	Thriving Boomers	Middle-income suburban couples between 51-65 years of age	8.0%	
	Golden Year Guardians	Fixed-income seniors with strong community ties	7.6%	
	Bourgeois Melting Pot	Mid to late career, middle-aged, middle-income suburban married couples	9.7%	Suburban Families 29%
	Suburban Style	Moderately affluent suburban families with children in the household	6.7%	
	Family Union	Middle-income blue-collar families with children	6.7%	
	Flourishing Families	Well-educated, affluent families with active lifestyles	6.2%	
	Singles & Starters	Young singles starting out and starting families in urban areas	9.9%	Urban Young Adults 10%

# Economic Impacts of STS

- 2021 Average of 10 daily departures represented approximately:
  - \$228.0 million economic impact and 1,769 jobs – Sonoma County
  - \$231.4 million economic impact and 1,788 jobs – North Bay
- STS's Capital improvement plan contributes an additional \$33.1 million per year and 169 jobs
- STS represents 0.8% of the total Sonoma County Economy



The SMART way to Fly!

# SMART **CONNECT**

your ride, on demand



Three ways to ride:

- Board at the Train Station or Airport
- Call (800) 727-0279
- Download



Ride Pingo app

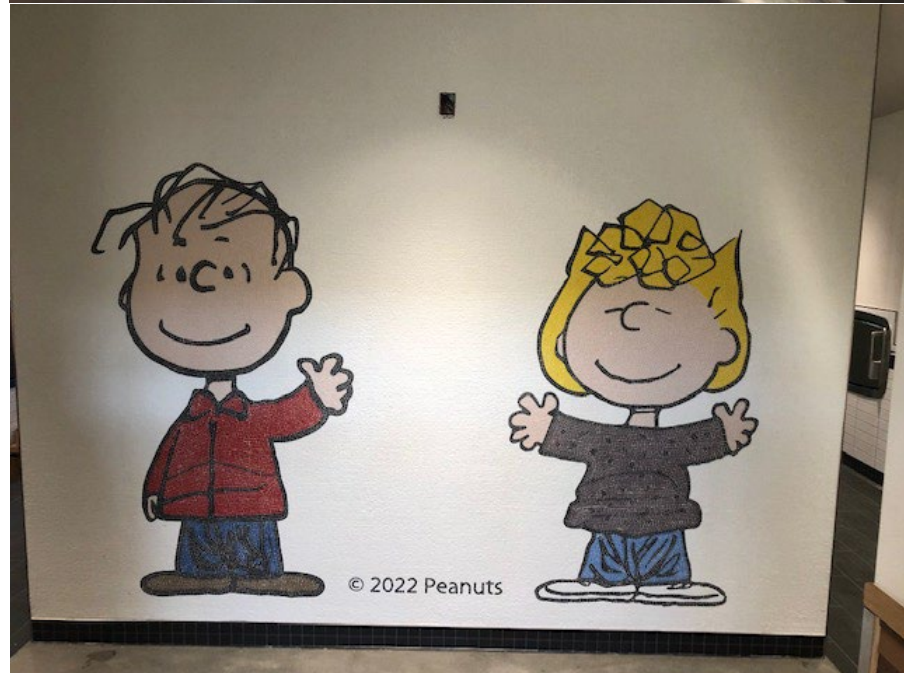
# Capital Projects



# Terminal Renovation



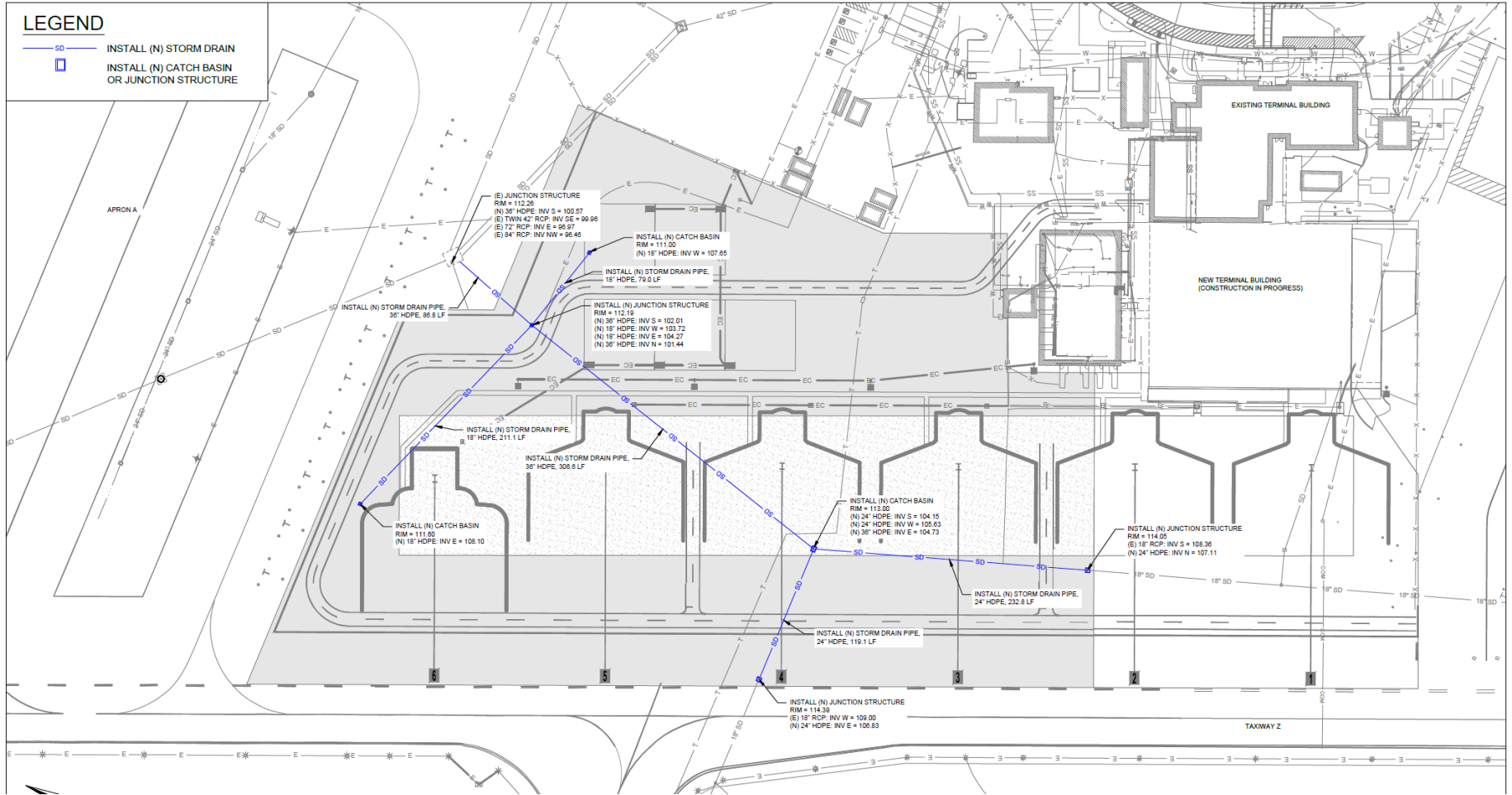
Preview File



# Airline Apron

## LEGEND

- SD— INSTALL (N) STORM DRAIN
- INSTALL (N) CATCH BASIN OR JUNCTION STRUCTURE





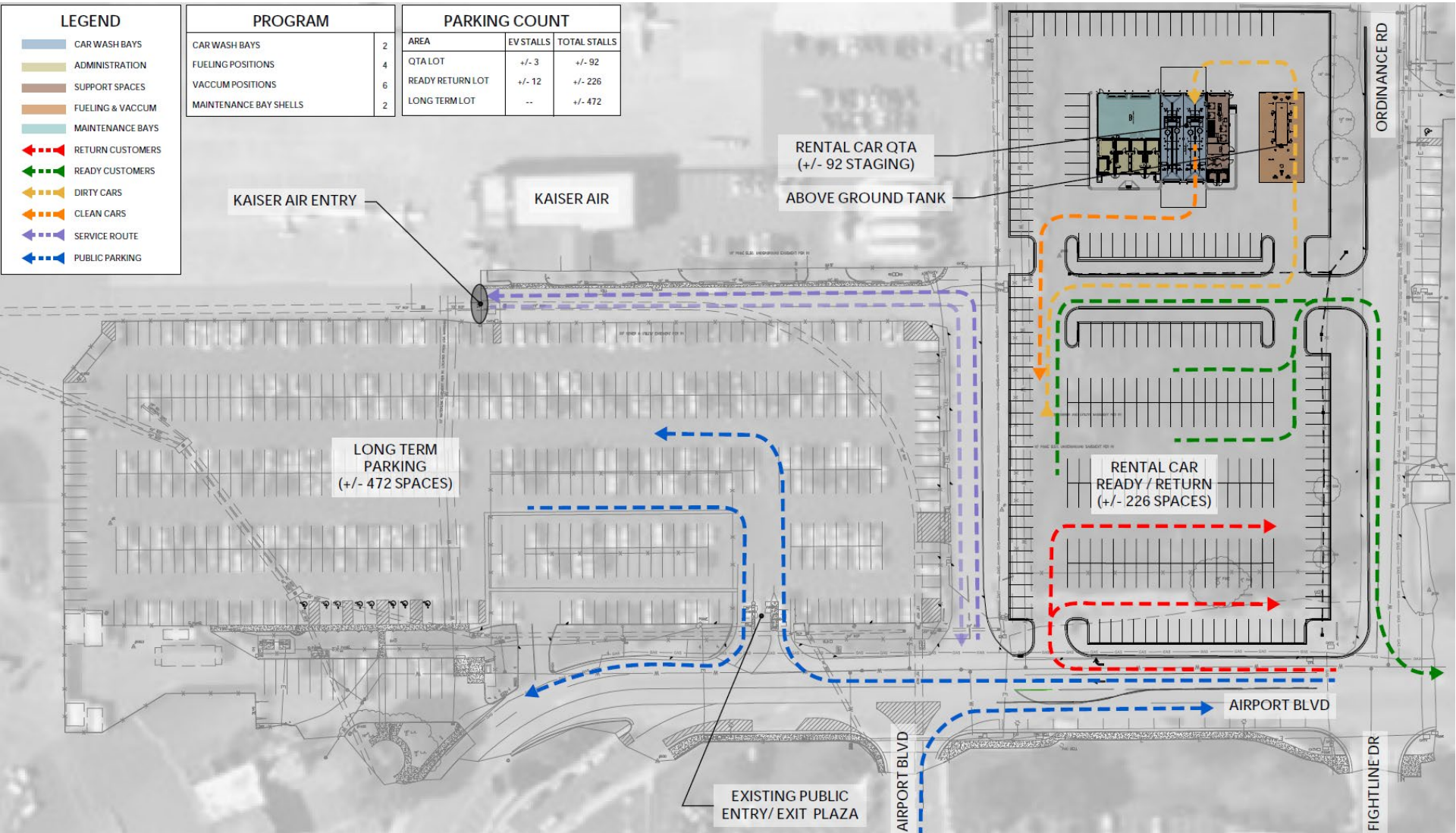
# Future Consolidated Rental Car Facility

**LEGEND**

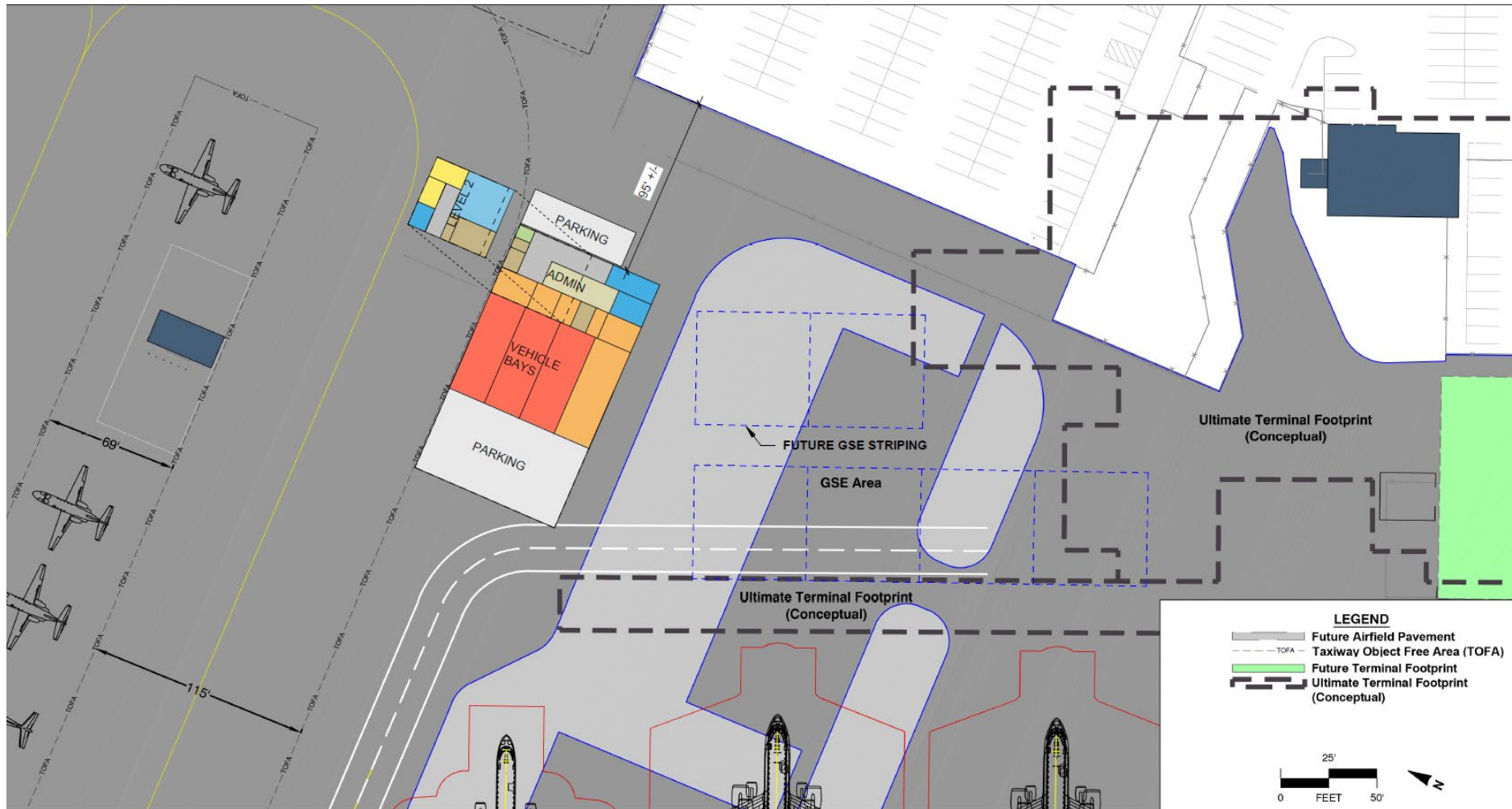
- ▬ CAR WASH BAYS
- ▬ ADMINISTRATION
- ▬ SUPPORT SPACES
- ▬ FUELING & VACCUM
- ▬ MAINTENANCE BAYS
- ▬ RETURN CUSTOMERS
- ▬ READY CUSTOMERS
- ▬ DIRTY CARS
- ▬ CLEAN CARS
- ▬ SERVICE ROUTE
- ▬ PUBLIC PARKING

PROGRAM	QUANTITY
CAR WASH BAYS	2
FUELING POSITIONS	4
VACCUM POSITIONS	6
MAINTENANCE BAY SHELLS	2

PARKING COUNT		
AREA	EV STALLS	TOTAL STALLS
QTA LOT	+/- 3	+/- 92
READY RETURN LOT	+/- 12	+/- 226
LONG TERM LOT	--	+/- 472



# Aircraft Rescue and Firefighting Facility



# Airport Landfill Compost Facility





Charles M. Schulz – Sonoma County Airport  
**Airport Update**

Thank you for your time and  
**Remember - fly STS!!**

